

OFFICIAL NCAA BASKETBALL BOX SCORE
Harrison County Fillies vs West Carter Lady Comets

03/23/2000 2:50 pm
Final Box Score

Arena Girls' Sweet 16, McBrayer Arena
City, State Richmond, KY

No.	Harrison County Fillies	Total FG		3-point		FT	FTA	Rebounds			F	TP	A	TO	BLK	STL	MIN
		FG	FGA	FG	FGA			Off	Def	Tot							
4	Nicole Moore	0	0	0	0	0	0	0	0	0	0	0	0	0	0	0:14	
10	Allison Snedeker	0	0	0	0	0	0	0	0	0	0	0	0	0	0	0:56	
12	Brooke Faulkner	0	1	0	0	0	0	1	0	1	0	0	0	0	0	0:19	
15	Amanda Linville	2	2	0	0	0	2	2	0	2	2	4	0	0	0	3:24	
20	Amanda Fryman	2	2	1	1	0	0	0	0	0	5	5	0	1	0	12:08	
22	Nikki Owsley	0	1	0	0	0	0	0	0	0	0	0	0	0	0	0:19	
23	* Christine Garnett	0	3	0	3	1	2	0	2	2	3	1	1	3	0	29:35	
25	* Camryn Whitaker	8	22	1	3	9	9	0	2	2	5	26	2	7	0	31:27	
32	Shelly Cracraft	0	0	0	0	0	0	0	0	0	0	0	0	0	0	0:33	
34	* Megan Gray	1	4	0	0	0	0	3	6	9	1	2	0	2	2	30:22	
35	* Kim Furnish	2	2	0	0	0	0	2	2	4	2	4	0	2	0	19:26	
40	Taryn Seaman	0	0	0	0	0	0	0	0	0	0	0	0	0	0	DNP	
42	Samantha Sumpter	0	0	0	0	0	0	0	0	0	0	0	0	0	0	0:14	
44	* Libby Purcell	3	8	0	1	4	6	2	5	7	2	10	0	3	1	30:44	
45	Lindsey Dickson	0	0	0	0	0	0	0	0	0	0	0	0	0	0	0:19	
Team (Included in Totals)								2	1	3							
Totals		18	45	2	8	14	19	12	18	30	20	52	4	19	3	6	160
Total FG%: 1st half 8 - 19 (42.1%)		2nd half 10 - 26 (38.5%)		Game 18 - 45 (40.0%)		Deadball											
3Pt FG%: 1st half 0 - 1 (0.00%)		2nd half 2 - 7 (28.6%)		Game 2 - 8 (25.0%)		rebounds											
FT%: 1st half 7 - 8 (87.5%)		2nd half 7 - 11 (63.6%)		Game 14 - 19 (73.7%)		2											

No.	West Carter Lady Comets	Total FG		3-point		FT	FTA	Rebounds			F	TP	A	TO	BLK	STL	MIN
		FG	FGA	FG	FGA			Off	Def	Tot							
30	Leah Frasier	0	0	0	0	0	0	0	0	0	0	0	0	0	0	0:53	
32	Cassandra Glover	0	0	0	0	0	0	0	0	0	0	0	0	0	0	0:33	
33	Jenise James	0	0	0	0	0	0	0	1	1	1	0	0	1	1	0:33	
34	* Mandy Sterling	3	11	1	6	0	0	1	1	2	4	7	2	1	2	24:45	
35	* Megan Gearhart	7	17	2	6	4	5	1	2	3	3	20	4	2	0	31:27	
40	Cathy Day	2	2	0	0	3	3	1	0	1	0	7	1	1	0	10:52	
41	* Kandl Brown	5	7	4	5	8	12	2	3	5	3	22	1	3	2	31:07	
42	Shanna Shelton	0	0	0	0	0	0	0	0	0	0	0	0	0	0	1:56	
43	* Kayla Jones	3	5	0	0	1	2	1	5	6	3	7	0	2	0	27:47	
44	Brooke Mullis	0	1	0	0	0	0	0	0	0	0	0	0	0	0	3:14	
45	Nicki Burchett	0	0	0	0	0	0	0	0	0	0	0	0	0	0	0:33	
50	* Meghan Hillman	1	5	0	1	3	4	2	6	8	3	5	3	0	0	25:47	
55	Robin Butler	0	0	0	0	0	0	0	0	0	0	0	0	0	0	0:33	
Team (Included in Totals)								3	0	3							
Totals		21	48	7	18	19	26	11	18	29	17	68	11	10	5	12	160
Total FG%: 1st half 11 - 28 (39.3%)		2nd half 10 - 20 (50.0%)		Game 21 - 48 (43.8%)		Deadball											
3Pt FG%: 1st half 3 - 12 (25.0%)		2nd half 4 - 6 (66.7%)		Game 7 - 18 (38.9%)		rebounds											
FT%: 1st half 9 - 10 (90.0%)		2nd half 10 - 16 (62.5%)		Game 19 - 26 (73.1%)		4											

Technical Fouls: None

Attendance: 5,851

Officials: Larry Hammer, Glenn Gray, Steve Kellam

Score by Period	1st H	2nd H	OT	OT	Final	Record	Overall	Conf
West Carter Lady Comets	34	34	0	0	68	Lady Comets	35-1	
Harrison County Fillies	23	29	0	0	52	Fillies	28-4	

	Lady Comets	Fillies	Lady Comets	Fillies	Lady Comets	Fillies		
Points off Turnovers	12	10	Second Effort Points	6	6	Bench Points	7	9
Points in the Paint	22	24	3 Point Points	21	6	Free Throw Points	19	14
Largest Lead	66	48 (18 pts)	Lead Changes	2		Number of Ties	2	

University of Kentucky Basketball - Play by Play Report - Period 1 (pg 1)

West Carter Lady Comets vs. Harrison County Fillies

Date: 03/23/2000 Time: 2:50 pm Site: Girls' Sweet 16, McBrayer Arena-Richmond, KY Attendance: 5,851

##	Name	Action	Score	Clock	Diff	##	Name	Action	Action
34	M Sterling	Start Game				23	C Garnett	Start Game	
35	M Gearhart	Start Game				25	C Whitaker	Start Game	
41	K Brown	Start Game				34	M Gray	Start Game	
43	K Jones	Start Game				35	K Furnish	Start Game	
50	M Hillman	Start Game				44	L Purcell	Start Game	
50	M Hillman	Jump Ball Win		1 7:58		34	M Gray	Jump Ball Loss	
35	M Gearhart	FT Made	1-0	1 7:43	+1	35	K Furnish	Personal Foul	
35	M Gearhart	FT Made	2-0	1 7:43	+2				
				1 7:36		25	C Whitaker	FG Attempt	44 L Purcell Off Reb
50	M Hillman	Def Rebound		1 7:31		23	C Garnett	3Pt Attempt	
50	M Hillman	3Pt Attempt		1 7:18		34	M Gray	Block	
34	M Sterling	3Pt Attempt		1 7:10					
35	M Gearhart	3Pt Attempt		1 6:51					
34	M Sterling	FG Attempt		1 6:47					
			2-2	1 6:34	(T1)	Fillies	Def Rebound		
41	K Brown	3Pt Made	5-2	1 6:21	+3	44	L Purcell	FG Made	25 C Whitaker Assist
50	M Hillman	Def Rebound		1 6:05		34	M Gray	FG Attempt	
				1 6:01		35	K Furnish	Personal Foul	
50	M Hillman	FG Made	7-2	1 5:49	+5				
			7-4	1 5:22	+3	44	L Purcell	FG Made	
35	M Gearhart	FG Made	9-4	1 4:54	+5				
			9-6	1 4:43	+3	35	K Furnish	Layup Made	25 C Whitaker Assist
34	M Sterling	FG Attempt		1 4:32		44	L Purcell	Def Rebound	
				1 4:04		25	C Whitaker	Turn Over	(Bad Pass)
41	K Brown	Steal		1 4:01					
35	M Gearhart	FG Attempt		1 3:56		44	L Purcell	Block	34 M Gray Def Reb
			9-8	1 3:41	+1	25	C Whitaker	FG Made	
35	M Gearhart	3Pt Attempt		1 3:22		34	M Gray	Def Rebound	
34	M Sterling	Personal Foul		1 3:17					
35	M Gearhart	Personal Foul	9-9	1 2:58	(T2)	25	C Whitaker	FT Made	
			9-10	1 2:58	-1 (L1)	25	C Whitaker	FT Made	
				1 2:58					
				1 2:58		20	A Fryman	Enter Game	for 35 K Furnish
35	M Gearhart	Layup Made	11-10	1 2:43	+1 (L2)				
50	M Hillman	Personal Foul		1 2:23					
				1 2:20		44	L Purcell	Turn Over	
34	M Sterling	Steal		1 2:19					
34	M Sterling	Layup Att		1 2:05		34	M Gray	Def Rebound	
				1 2:03		34	M Gray	Turn Over	(Double Dribble)
34	M Sterling	3Pt Attempt		1 1:44					
50	M Hillman	FT Made	12-10	1 1:44	+2	44	L Purcell	Personal Foul	
50	M Hillman	FT Made	13-10	1 1:44	+3				
43	K Jones	Def Rebound		1 1:26		44	L Purcell	FG Attempt	
35	M Gearhart	Layup Made	15-10	1 1:12	+5				
				1 0:56		20	A Fryman	Turn Over	(Fumble)
				1 0:37		20	A Fryman	Personal Foul	
40	C Day	Enter Game		1 0:37					
34	M Sterling	3Pt Attempt		1 0:33					
40	C Day	Turn Over		1 0:28					
50	M Hillman	Def Rebound		1 0:14		25	C Whitaker	FG Attempt	
41	K Brown	Turn Over		1 0:01					
			15-12	1 0:01	+3	25	C Whitaker	Steal	
				1 0:01		25	C Whitaker	Layup Made	

End of Period Summary Lady Comets 15 Fillies 12

Largest Lead: Lady Comets 7 Fillies 2 (5 pts)
 Lead in Period: Lady Comets 7 Fillies 2 (5 pts)
 2 for 2 oppo pts
 5 for 2 pts
 5/15 for 33.3 %
 4/4 for 100 %

Turnovers
 2nd Chances
 Field Goals
 Free Throws

Lead Changes: 2 Ties: 2
 Lead Changes: 2 Ties: 2 (this period)
 4 for 2 oppo pts
 1 for 0 pts
 5/10 for 50.0 %
 2/2 for 100 %

University of Kentucky Basketball - Play by Play Report - Period 2 (pg 1)
West Carter Lady Comets vs. Harrison County Fillies
Date: 03/23/2000 Time: 2:50 pm Site: Girls' Sweet 16, McBrayer Arena-Richmond, KY Attendance: 5,851

##	Name	Action	Action	Score	Clock	Diff	##	Name	Action	Action
					2 8:00		35	K Furnish	Enter Game	for 20 A Fryman
					2 7:51		23	C Garnett	Turn Over	(Bad Pass)
50	M Hillman	FG Attempt		15-14	2 7:29		44	L Purcell	Def Rebound	
35	M Gearhart	FG Attempt			2 7:21	+1	25	C Whitaker	FG Made	
34	M Sterling	Block	41 K Brown Def Reb		2 7:07		44	L Purcell	Def Rebound	
35	M Gearhart	Layup Made		17-14	2 7:01		25	C Whitaker	FG Attempt	
					2 6:52	+3				
					2 6:31		44	L Purcell	Turn Over	
					2 6:30					
40	C Day	Steal			2 6:25					
34	M Sterling	Turn Over	(Traveling)		2 6:25					
43	K Jones	Enter Game	for 34 M Sterling		2 6:25					
35	M Gearhart	Def Rebound			2 5:55		44	L Purcell	FG Attempt	
35	M Gearhart	Layup Att	43 K Jones Off Reb		2 5:45					
					2 5:40		44	L Purcell	Personal Foul	
43	K Jones	FT Attempt	Lady Comets Deadball Reb		2 5:40					
43	K Jones	FT Made		18-14	2 5:40	+4				
50	M Hillman	Def Rebound			2 5:32		25	C Whitaker	FG Attempt	
40	C Day	Layup Made	50 M Hillman Assist	20-14	2 5:25	+6				
50	M Hillman	Personal Foul			2 5:14					
					2 5:11		35	K Furnish	Turn Over	(Bad Pass)
					2 5:11		25	C Whitaker	Personal Foul	
34	M Sterling	Enter Game	for 40 C Day		2 5:11					
34	M Sterling	3Pt Attempt	41 K Brown Off Reb		2 4:57					
35	M Gearhart	3Pt Attempt			2 4:54		25	C Whitaker	Def Rebound	
					2 4:49		25	C Whitaker	Turn Over	
43	K Jones	Steal			2 4:48					
41	K Brown	3Pt Attempt			2 4:46		34	M Gray	Def Rebound	
43	K Jones	Personal Foul			2 4:43					
					2 4:25		34	M Gray	Turn Over	
					2 4:25					
41	K Brown	Steal			2 4:13	+8				
41	K Brown	FG Made	50 M Hillman Assist	22-14	2 3:53		25	C Whitaker	FG Attempt	
34	M Sterling	Def Rebound			2 3:41	+11				
41	K Brown	3Pt Made	35 M Gearhart Assist	25-14	2 3:19	+9	44	L Purcell	FG Made	23 C Garnett Assist
					25-16	2 3:08	+11			
35	M Gearhart	FG Made			2 2:50					
50	M Hillman	Personal Foul			2 2:50					
40	C Day	Enter Game	for 50 M Hillman		2 2:50	+10	44	L Purcell	FT Made	
					2 2:50		44	L Purcell	FT Attempt	
43	K Jones	Def Rebound			2 2:37	+13				
35	M Gearhart	3Pt Made		30-17	2 1:54		23	C Garnett	Turn Over	(Bad Pass)
					2 1:51					
43	K Jones	Steal			2 1:44		23	C Garnett	Def Rebound	
35	M Gearhart	Layup Att			2 1:36					
34	M Sterling	Personal Foul			2 1:36					
42	S Shelton	Enter Game	for 34 M Sterling		2 1:36	+12	25	C Whitaker	FT Made	
					30-18	2 1:36	+11	25	C Whitaker	FT Made
					2 1:36					
					2 1:36		20	A Fryman	Enter Game	for 35 K Furnish
43	K Jones	Turn Over	(Bad Pass)		2 1:33					
					2 1:31		25	C Whitaker	Steal	
43	K Jones	Personal Foul		30-20	2 1:30	+10	25	C Whitaker	FT Made	
					30-21	2 1:30	+9	25	C Whitaker	FT Made
40	C Day	FT Made			2 1:25	+10	25	C Whitaker	Personal Foul	
40	C Day	FT Made			2 1:25	+11				
43	K Jones	Def Rebound			2 1:14		25	C Whitaker	FG Attempt	
					2 0:24		20	A Fryman	Personal Foul	
44	B Mullis	Enter Game	for 43 K Jones		2 0:24					
41	K Brown	FT Made		33-21	2 0:24	+12				
41	K Brown	FT Made		34-21	2 0:24	+13				
					2 0:06		44	L Purcell	FG Attempt	34 M Gray Off Reb
					34-23	2 0:04	+11	34	M Gray	Putback Made

OFFICIAL NCAA BASKETBALL BOX SCORE
Harrison County Fillies vs West Carter Lady Comets

03/23/2000 2:50 pm
1st Half Box Score

Arena Girls' Sweet 16, McBrayer Arena
City, State Richmond, KY

No.	Harrison County Fillies	Total FG		3-point		FT	FTA	Rebounds			F	TP	A	TO	BLK	STL	MIN
		FG	FGA	FG	FGA			Off	Def	Tot							
4	Nicole Moore	0	0	0	0	0	0	0	0	0	0	0	0	0	0	0	DNP
10	Allison Snedeker	0	0	0	0	0	0	0	0	0	0	0	0	0	0	0	DNP
12	Brooke Faulkner	0	0	0	0	0	0	0	0	0	0	0	0	0	0	0	DNP
15	Amanda Linville	0	0	0	0	0	0	0	0	0	0	0	0	0	0	0	DNP
20	Amanda Fryman	0	0	0	0	0	0	0	0	0	0	2	0	0	0	0	4:34
22	Nikki Owsley	0	0	0	0	0	0	0	0	0	0	0	0	0	0	0	DNP
23	* Christine Garnett	0	1	0	1	0	0	0	1	1	0	0	1	2	0	0	16:00
25	* Camryn Whitaker	3	9	0	0	6	6	0	1	1	2	12	2	2	0	2	16:00
32	Shelly Cracraft	0	0	0	0	0	0	0	0	0	0	0	0	0	0	0	DNP
34	* Megan Gray	1	2	0	0	0	0	1	4	5	0	2	0	2	1	0	16:00
35	* Kim Furnish	1	1	0	0	0	0	0	0	0	2	2	0	1	0	0	11:26
40	Taryn Seaman	0	0	0	0	0	0	0	0	0	0	0	0	0	0	0	DNP
42	Samantha Sumpster	0	0	0	0	0	0	0	0	0	0	0	0	0	0	0	DNP
44	* Libby Purcell	3	6	0	0	1	2	1	3	4	2	7	0	2	1	0	16:00
45	Lindsey Dickson	0	0	0	0	0	0	0	0	0	0	0	0	0	0	0	DNP
Team (Included in Totals)								0	1	1							
Totals		8	19	0	1	7	8	2	10	12	8	23	3	10	2	2	80
Total FG%: 1st half 8 - 19 (42.1%)		2nd half 0 - 0 (0.00%)		Game 8 - 19 (42.1%)		Deadball											
3Pt FG%: 1st half 0 - 1 (0.00%)		2nd half 0 - 0 (0.00%)		Game 0 - 1 (0.00%)		rebounds											
FT%: 1st half 7 - 8 (87.5%)		2nd half 0 - 0 (0.00%)		Game 7 - 8 (87.5%)		0											

No.	West Carter Lady Comets	Total FG		3-point		FT	FTA	Rebounds			F	TP	A	TO	BLK	STL	MIN
		FG	FGA	FG	FGA			Off	Def	Tot							
30	Leah Frasier	0	0	0	0	0	0	0	0	0	0	0	0	0	0	0	DNP
32	Cassandra Glover	0	0	0	0	0	0	0	0	0	0	0	0	0	0	0	DNP
33	Jenise James	0	0	0	0	0	0	0	0	0	0	0	0	0	0	0	DNP
34	* Mandy Sterling	0	7	0	4	0	0	1	1	2	2	0	0	1	1	1	13:10
35	* Megen Gearhart	6	13	1	4	2	2	0	1	1	1	15	2	0	0	0	16:00
40	Cathy Day	1	1	0	0	2	2	1	0	1	0	4	0	1	0	1	6:16
41	* Kandi Brown	3	4	2	3	2	2	1	1	2	0	10	0	1	0	2	16:00
42	Shanna Shelton	0	0	0	0	0	0	0	0	0	0	0	0	0	0	0	1:36
43	* Kayla Jones	0	0	0	0	1	2	1	3	4	2	1	0	1	0	2	13:24
44	Brooke Mullis	0	0	0	0	0	0	0	0	0	0	0	0	0	0	0	0:24
45	Nicki Burchett	0	0	0	0	0	0	0	0	0	0	0	0	0	0	0	DNP
50	* Meghan Hillman	1	3	0	1	2	2	1	4	5	3	4	3	0	0	0	13:10
55	Robin Butler	0	0	0	0	0	0	0	0	0	0	0	0	0	0	0	DNP
Team (Included in Totals)								2	0	2							
Totals		11	28	3	12	9	10	7	10	17	8	34	5	4	1	6	80
Total FG%: 1st half 11 - 28 (39.3%)		2nd half 0 - 0 (0.00%)		Game 11 - 28 (39.3%)		Deadball											
3Pt FG%: 1st half 3 - 12 (25.0%)		2nd half 0 - 0 (0.00%)		Game 3 - 12 (25.0%)		rebounds											
FT%: 1st half 9 - 10 (90.0%)		2nd half 0 - 0 (0.00%)		Game 9 - 10 (90.0%)		1											

Technical Fouls: None

Attendance: 5,851

Officials: Larry Hammer, Glenn Gray, Steve Kellam

	Score by Period			Record	Overall Conf
	1st H	2nd H	Final		
West Carter Lady Comets	34	0	34	Lady Comets	34-1
Harrison County Fillies	23	0	23	Fillies	28-3

	Lady Comets Fillies		Lady Comets Fillies		Lady Comets Fillies			
Points off Turnovers	4	4	Second Effort Points	3	2	Bench Points	4	0
Points in the Paint	12	10	3 Point Points	9	0	Free Throw Points	9	7
Largest Lead	30	17 (13 pts)	Lead Changes	2		Number of Ties	2	

University of Kentucky Basketball - Play by Play Report - Period 3 (pg 1)

West Carter Lady Comets vs. Harrison County Fillies

Date: 03/23/2000 Time: 2:50 pm Site: Girls' Sweet 16, McBrayer Arena-Richmond, KY Attendance: 5,851

##	Name	Action	Action	Score	Clock	Diff	##	Name	Action	Action
					3	7:54		25 C Whitaker	Turn Over	
					3	7:53				
34 M Sterling	Steal			36-23	3	7:49	+13			
34 M Sterling	Layup Made				3	7:31		25 C Whitaker	FG Attempt	
50 M Hillman	Def Rebound				3	7:20				
34 M Sterling	3Pt Attempt	50 M Hillman Off Reb			3	7:18		35 K Furnish	Def Rebound	
50 M Hillman	Putback Att			36-25	3	7:15	+11	25 C Whitaker	Layup Made	
				36-26	3	7:14	+10	25 C Whitaker	FT Made	
34 M Sterling	Personal Foul				3	7:14		15 A Linville	Enter Game	for 23 C Garnett
					3	7:07				
35 M Gearhart	Turn Over				3	7:06		25 C Whitaker	Steal	
					3	7:05		23 C Garnett	Enter Game	for 15 A Linville
				36-27	3	6:57	+9	44 L Purcell	FT Made	
41 K Brown	Personal Foul			36-28	3	6:57	+8	44 L Purcell	FT Made	
					3	6:57		15 A Linville	Enter Game	for 23 C Garnett
					3	6:50		15 A Linville	Personal Foul	
					3	6:50		23 C Garnett	Enter Game	for 15 A Linville
41 K Brown	FT Made			37-28	3	6:50	+9			
41 K Brown	FT Made			38-28	3	6:50	+10			
34 M Sterling	Block				3	6:38		23 C Garnett	3Pt Attempt	Fillies Off Reb
					3	6:33		25 C Whitaker	Turn Over	(Bad Pass)
					3	6:30				
34 M Sterling	Steal			40-28	3	6:14	+12			
43 K Jones	FG Made				3	5:54		25 C Whitaker	Turn Over	
					3	5:54				
41 K Brown	Steal				3	5:43				
43 K Jones	FG Attempt	35 M Gearhart Off Reb			3	5:38				
35 M Gearhart	3Pt Attempt	Lady Comets Deadball Reb			3	5:38				
					3	5:38		23 C Garnett	Personal Foul	
43 K Jones	Layup Made	34 M Sterling Assist		42-28	3	5:20	+14			
					3	5:01		25 C Whitaker	FG Attempt	Fillies Off Reb
					3	4:55		25 C Whitaker	3Pt Attempt	34 M Gray Off Reb
					3	4:52		34 M Gray	Putback Att	34 M Gray Off Reb
41 K Brown	Block			42-30	3	4:48	+12	34 M Gray	Putback Att	35 K Furnish Off Reb
					3	4:45		35 K Furnish	Putback Made	
41 K Brown	3Pt Made			45-30	3	4:20	+15			
					3	3:57		23 C Garnett	Turn Over	
41 K Brown	Steal				3	3:56		Fillies	Turn Over	
					3	3:51		25 C Whitaker	Personal Foul	
					3	3:51		Fillies	20 Sec Time Out	
41 K Brown	FT Attempt				3	3:51		25 C Whitaker	Def Rebound	
41 K Brown	FT Attempt			45-32	3	3:34	+13	25 C Whitaker	Layup Made	
					3	3:28		44 L Purcell	Def Rebound	
35 M Gearhart	Layup Att				3	3:21		25 C Whitaker	FG Attempt	44 L Purcell Off Reb
					3	3:16		25 C Whitaker	FG Attempt	
43 K Jones	Def Rebound			48-32	3	3:05	+16			
34 M Sterling	3Pt Made	35 M Gearhart Assist			3	2:41				
41 K Brown	Personal Foul				3	2:41				
					3	2:41				
34 M Sterling	Leave Game				3	2:30				
40 C Day	Enter Game	for 50 M Hillman			3	2:30				
44 B Mullis	Enter Game				3	2:30				
					3	2:25		44 L Purcell	Turn Over	
					3	2:23		20 A Fryman	Enter Game	for 34 M Gray
41 K Brown	Turn Over	(Bad Pass)		48-34	3	2:13				
					3	1:53	+14	25 C Whitaker	FG Made	
35 M Gearhart	Turn Over	(Traveling)			3	1:35				
					3	1:18		34 M Gray	Enter Game	for 20 A Fryman
					3	1:15		44 L Purcell	FG Attempt	
41 K Brown	Def Rebound			50-34	3	1:08	+16			
40 C Day	Layup Made	41 K Brown Assist		51-34	3	1:08	+17	23 C Garnett	Personal Foul	
40 C Day	FT Made				3	0:51		23 C Garnett	3Pt Attempt	35 K Furnish Off Reb
					3	0:48		35 K Furnish	Turn Over	(Bad Pass)
					3	0:43		34 M Gray	Block	
44 B Mullis	FG Attempt	Lady Comets Off Reb			3	0:43		20 A Fryman	Enter Game	for 44 L Purcell
					3	0:43		35 K Furnish	Def Rebound	
35 M Gearhart	FG Attempt				3	0:03				
35 M Gearhart	Personal Foul				3	0:01				

## Name	Action	Action	Score	Clock	Diff	## Name	Action	Action
End of Period Summary						Lady Comets 51	Fillies 34	
Largest Lead: Lady Comets 51						Fillies 34 (17 pts)	Lead Changes: 2 Ties: 2	
Lead in Period: Lady Comets 51						Fillies 34 (17 pts)	Lead Changes: 0 Ties: 0 (this period)	
3 for 4 oppo pts						Turnovers	7 for 6 oppo pts	
3 for 2 pts						2nd Chances	7 for 2 pts	
6/13 for 46.2 %						Field Goals	4/14 for 28.6 %	
3/5 for 60.0 %						Free Throws	3/3 for 100 %	

University of Kentucky Basketball - Play by Play Report - Period 4 (pg 1)

West Carter Lady Comets vs. Harrison County Fillies

Date: 03/23/2000 Time: 2:50 pm Site: Girls' Sweet 16, McBrayer Arena-Richmond, KY Attendance: 5,851

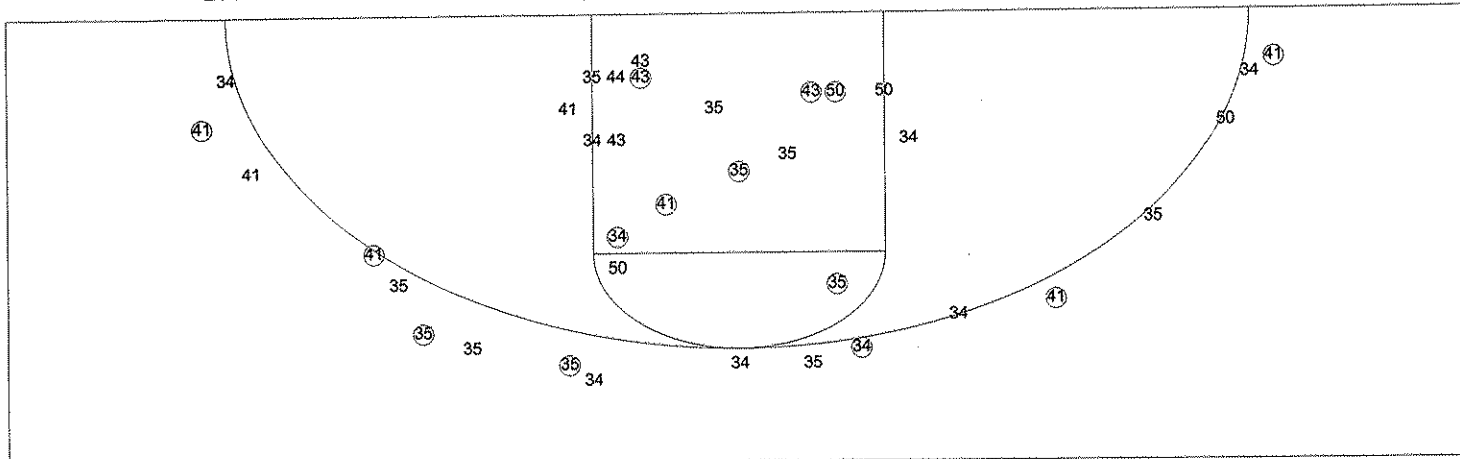
## Name	Action	Action	Score	Clock	Diff	## Name	Action	Action
34 M Sterling	Enter Game	for 40 C Day		4 8:00		44 L Purcell	Enter Game	for 20 A Fryman
50 M Hillman	Enter Game	for 44 B Mullis		4 8:00				
41 K Brown	FG Attempt		51-37	4 7:51		20 A Fryman	Enter Game	for 35 K Furnish
41 K Brown	Turn Over			4 7:30	+14	23 C Garnett	Def Rebound	
				4 7:14		20 A Fryman	3Pt Made	
			51-39	4 6:48	+12	25 C Whitaker	Steal	
50 M Hillman	FG Attempt			4 6:21		20 A Fryman	FG Made	
				4 6:15		20 A Fryman	Personal Foul	
34 M Sterling	FG Made		53-41	4 6:06	+10	34 M Gray	Def Rebound	
34 M Sterling	Personal Foul			4 5:47	+12	25 C Whitaker	FG Made	
50 M Hillman	Def Rebound			4 5:33				
				4 5:28		25 C Whitaker	FG Attempt	
40 C Day	Enter Game	for 34 M Sterling		4 5:18		25 C Whitaker	Personal Foul	
41 K Brown	3Pt Made	35 M Gearhart Assist	56-41	4 5:14	+15			
			56-44	4 4:55	+12	25 C Whitaker	3Pt Made	
35 M Gearhart	3Pt Made	40 C Day Assist	59-44	4 4:39	+15			
35 M Gearhart	Personal Foul			4 4:16				
				4 4:16		23 C Garnett	FT Attempt	Fillies Deadball Reb
			59-45	4 4:16	+14	23 C Garnett	FT Made	
				4 4:16		15 A Linville	Enter Game	for 23 C Garnett
34 M Sterling	Enter Game	for 40 C Day		4 4:12		20 A Fryman	Steal	
43 K Jones	Turn Over	(Bad Pass)		4 4:04		25 C Whitaker	Turn Over	
43 K Jones	Steal			4 4:04				
43 K Jones	FG Attempt			4 3:39		44 L Purcell	Def Rebound	
43 K Jones	Personal Foul		59-46	4 3:38	+13	44 L Purcell	FT Made	
35 M Gearhart	Def Rebound			4 3:38		44 L Purcell	FT Attempt	
43 K Jones	FG Made	34 M Sterling Assist	61-46	4 3:23	+15			
41 K Brown	Block			4 3:04		25 C Whitaker	3Pt Attempt	
				4 3:00				
43 K Jones	Def Rebound			4 2:58				
				4 2:40		20 A Fryman	Personal Foul	
				4 2:40		Fillies	20 Sec Time Out	
				4 2:40		23 C Garnett	Enter Game	for 15 A Linville
35 M Gearhart	FT Attempt	41 K Brown Off Reb		4 2:40				
Lady Comets	20 Sec Time Out			4 2:37				
				4 2:14		20 A Fryman	Personal Foul	
				4 2:14		10 A Snedeker	Enter Game	for 20 A Fryman
50 M Hillman	FT Attempt	Lady Comets Deadball Reb		4 2:14				
50 M Hillman	FT Made		62-46	4 2:14	+16			
41 K Brown	Personal Foul		62-47	4 2:01	+15	25 C Whitaker	FT Made	
			62-48	4 2:01	+14	25 C Whitaker	FT Made	
				4 2:01		15 A Linville	Enter Game	for 10 A Snedeker
				4 1:37		15 A Linville	Personal Foul	
40 C Day	Enter Game	for 43 K Jones		4 1:37				
				4 1:37		10 A Snedeker	Enter Game	for 15 A Linville
41 K Brown	FT Made		63-48	4 1:37	+15			
41 K Brown	FT Attempt			4 1:37		34 M Gray	Def Rebound	
				4 1:25		25 C Whitaker	Turn Over	
40 C Day	Steal			4 1:24				
				4 1:08		34 M Gray	Personal Foul	
				4 1:08		15 A Linville	Enter Game	for 10 A Snedeker
41 K Brown	FT Made		64-48	4 1:08	+16			
41 K Brown	FT Made		65-48	4 1:08	+17			
41 K Brown	Def Rebound			4 0:55		44 L Purcell	3Pt Attempt	
				4 0:53		23 C Garnett	Personal Foul	
34 M Sterling	Leave Game			4 0:53				
30 L Frasier	Enter Game	for 50 M Hillman		4 0:53				
44 B Mullis	Enter Game			4 0:53				
41 K Brown	FT Attempt	Lady Comets Deadball Reb		4 0:53				
41 K Brown	FT Made		66-48	4 0:53	+18			
42 S Shelton	Enter Game	for 41 K Brown		4 0:53				

University of Kentucky Basketball - Play by Play Report - Period 4 (pg 2)
West Carter Lady Comets vs. Harrison County Fillies

Date: 03/23/2000 Time: 2:50 pm Site: Girls' Sweet 16, McBrayer Arena-Richmond, KY Attendance: 5,851

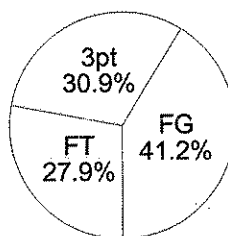
##	Name	Action	Action	Score	Clock	Diff	##	Name	Action	Action
				66-50	4 0:42		25	C Whitaker	FG Attempt	15 A Linville Off Reb
					4 0:40	+16	15	A Linville	Putback Made	
					4 0:39			Fillies	Time Out	
					4 0:33		25	C Whitaker	Personal Foul	
					4 0:33		10	A Snedeker	Enter Game	for 25 C Whitaker
40	C Day	Leave Game			4 0:33					
32	C Glover	Enter Game	for 44 B Mullis		4 0:33					
33	J James	Enter Game			4 0:33					
					4 0:33		34	M Gray	Leave Game	
					4 0:33		32	S Cracraft	Enter Game	for 44 L Purcell
					4 0:33		42	S Sumpter	Enter Game	
45	N Burchett	Enter Game	for 42 S Shelton		4 0:33		4	N Moore	Enter Game	for 23 C Garnett
35	M Gearhart	FT Made		67-50	4 0:33	+17				
35	M Gearhart	FT Made		68-50	4 0:33	+18				
55	R Butler	Enter Game	for 35 M Gearhart		4 0:33					
				68-52	4 0:20	+16	15	A Linville	FG Made	10 A Snedeker Assist
					4 0:19			Fillies	Time Out	
					4 0:19		4	N Moore	Leave Game	
					4 0:19		10	A Snedeker	Leave Game	
					4 0:19		15	A Linville	Leave Game	
					4 0:19		32	S Cracraft	Leave Game	
					4 0:19		45	L Dickson	Enter Game	for 42 S Sumpter
					4 0:19		12	B Faulkner	Enter Game	
					4 0:19		22	N Owsley	Enter Game	
					4 0:19		32	S Cracraft	Enter Game	
					4 0:19		15	A Linville	Enter Game	
33	J James	Turn Over			4 0:15					
33	J James	Personal Foul			4 0:13		12	B Faulkner	Steal	
					4 0:12		15	A Linville	FT Attempt	Fillies Deadball Reb
					4 0:12		15	A Linville	FT Attempt	15 A Linville Off Reb
					4 0:05		22	N Owsley	FG Attempt	12 B Faulkner Off Reb
33	J James	Block	33 J James Def Reb		4 0:02		12	B Faulkner	FG Attempt	

University of Kentucky Basketball - TEAM SHOT CHART for the Lady Comets
 West Carter Lady Comets vs. Harrison County Fillies
 DATE: 03/23/2000 TIME: 2:50 pm SITE: Girls' Sweet 16, McBrayer Arena-Richmond, KY

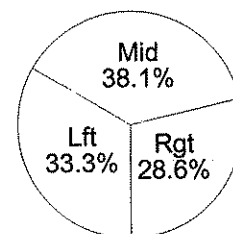


Shot Summary	M/A	%	PTS
3Pt FG	7/18	38.9%	21
2Pt FG	14/30	46.7%	28
Layups - L	3/6	50.0%	6
Layups - R	4/5	80.0%	8
Dunks	0/0	0.0%	0
Putbacks	0/1	0.0%	0
Overall Shooting	21/48	43.8%	49
Free Throws	19/26	73.1%	19
Total Points			68

Scoring Distribution

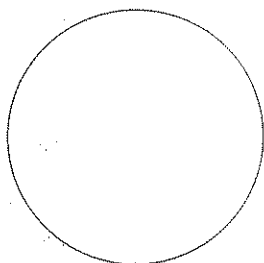


Scoring Locations



By Period	FG	FGA	FG%	3Pt	3PA	3P%	FT	FTA	FT%	PTS	ORB	DRB	TR	PF	AST	TO	BS	ST	P/S
1st Period	5	15	33.3	1	7	14.3	4	4	100	15	5	4	9	3	2	2	0	2	0.88
2nd Period	6	13	46.2	2	5	40.0	5	6	83.3	19	2	6	8	5	3	2	1	4	1.19
3rd Period	6	13	46.2	2	4	50.0	3	5	60.0	17	3	3	6	4	3	3	2	4	1.13
4th Period	4	7	57.1	2	2	100	7	11	63.6	17	1	5	6	5	3	3	2	2	1.42
Game	21	48	43.8	7	18	38.9	19	26	73.1	68	11	18	29	17	11	10	5	12	1.11

Scoring Breakdown



Scoring Range

